

# INSTRUCTIONS FOR IDENTIFYING ASSESSOR'S PARCEL NUMBERS

ASSESSOR'S OFFICE OF VENTURA COUNTY

## EXAMPLE: **089 - 0 - 283 - 185**

Assessor's Map Book = **089**

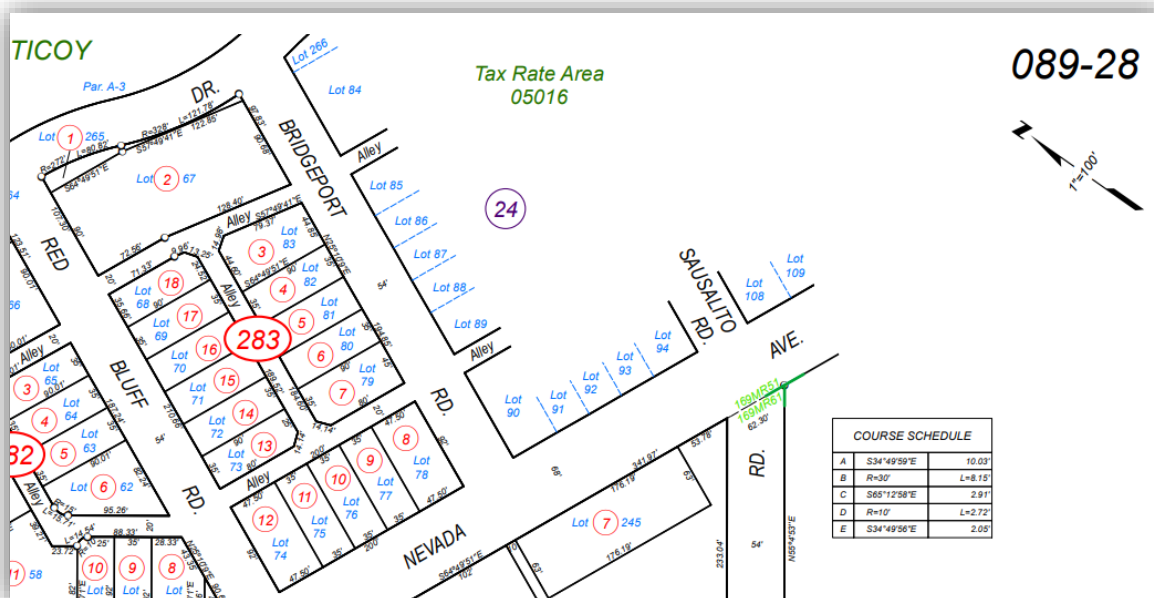
Expansion Digit = **0**

Page Number of Book 089 = **28**

Block Number of Page 28 = **3**

Parcel of Block 3 = **18**

Suffix Number indicates Interest = **5**



**Expansion Digit**

- 5 = Pipeline Right of Way Assessment
- 7 = "Fee" & "Leased" Sand and Gravel Production
- 8 = "Fee" Mineral Rights (Producing owned in Fee)
- 9 = "Leasehold" Mineral Rights

**Suffix Number**

- 0 = Surface & Mineral Rights
- 1, 2, 3, 6, 7, 8 = Multiple Interest
- 4 = Mineral Interest Only
- 5 = Surface Interest (None or Partial Mineral Interest)
- 9 = Other

# ASSESSOR'S MAP SYMBOLS



**Parcel Number**

A ¼ inch circle with a number assigned to a specific parcel on the map.



**Parcel Number w/Acreage**

A parcel that contains one acre or more



**Voided Parcel**

A parcel that has been voided/inactivated

*Lot 2 / Par. A*

**Lot / Parcel Number**

A parcel designation to a specific plot of land recorded under the Subdivision Map Act.

*Par. 2*

**Ghosted Lot Number**

A lot number that has had its original boundaries changed



**Adjacent Book Number**

A 9/16<sup>th</sup> circle noting an adjacent book reference. A broken circle indicates that a portion of the map has moved to an interior adjacent book.



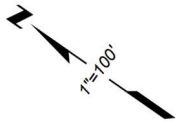
**Adjacent Page Number**

A 3/8<sup>th</sup> circle noting an adjacent exterior page reference. A broken circle indicates that a portion of the map has moved to an interior adjacent page.



**Block Number**

A 5/8<sup>th</sup> ellipse noting a block division of the page



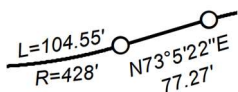
**North Arrow**

Orientation symbol for true North & map scale



**Tick Mark**

A 1/32<sup>nd</sup> circle noting the end of a bearing or course



**Map Dimension**

Bearing or radius & length of a course based on an official record



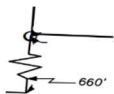
**Tract Boundary**

Subdivision boundary established per a book of Miscellaneous Records



**Land Hook**

Notes a parcel with one assessment buy divided by a road, flood control channel, etc.



**Foreshorten**

Designates courses shortened to fit on page



**Roadway**

Right-of-way outlined in a heavy line.